

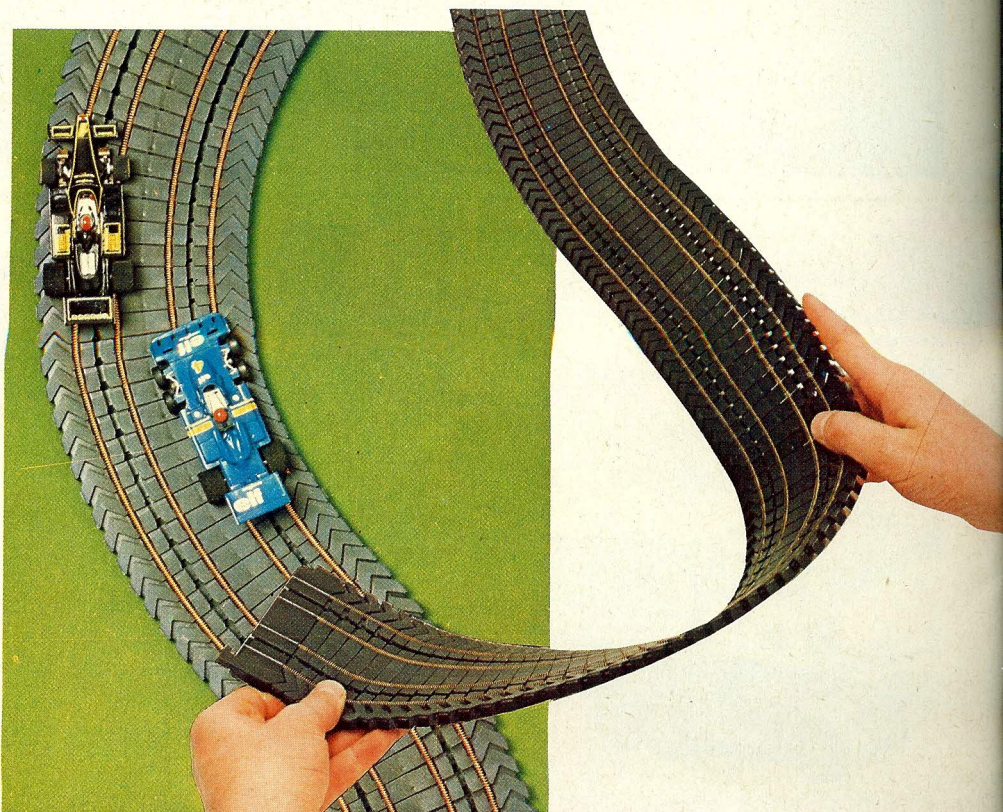
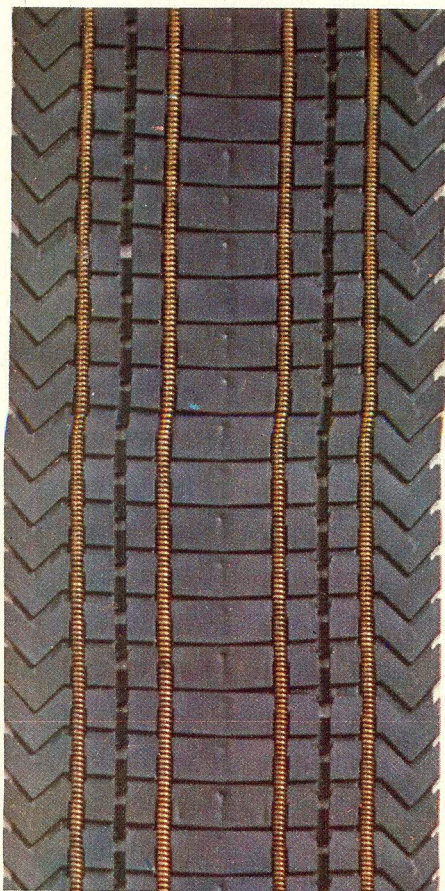
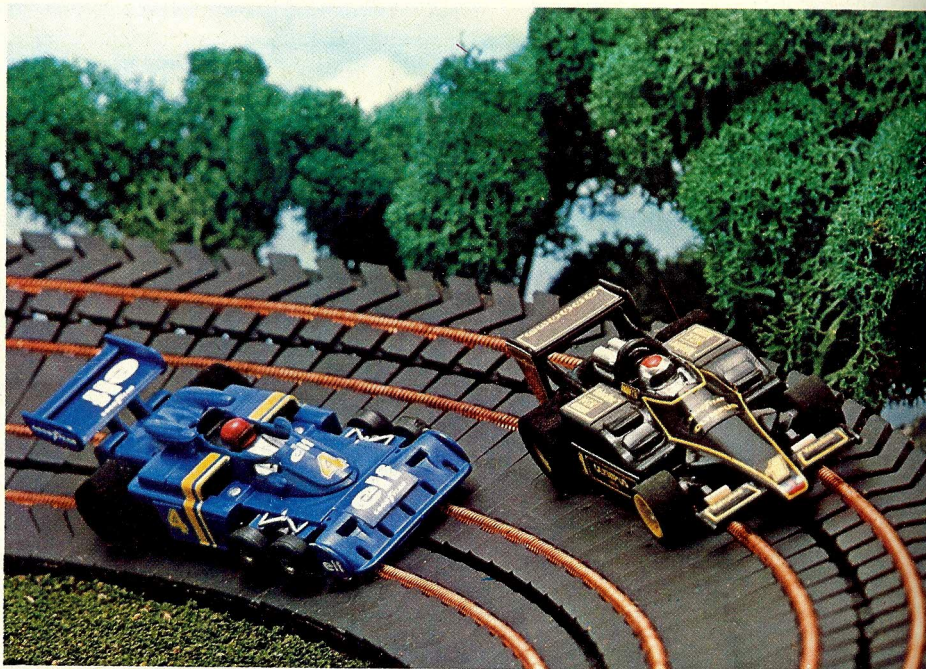
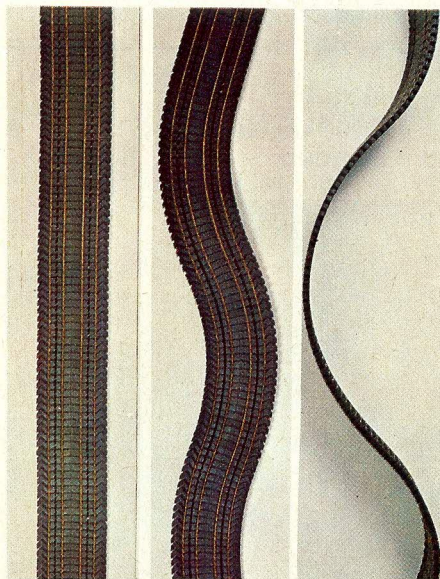
**AURORA<sup>®</sup> AFX<sup>®</sup>**  
World Championship  
Motor Racing

**NEW** Adds  
a new  
dimension  
to your  
track layouts

**FLEX-TRACK<sup>™</sup>**

Aurora AFX announces the greatest ever breakthrough in track technology with new Flex-track. A 36 inch length of flexible racing track providing even

greater flexibility over the type of layouts you wish to build. Flex-track can be curved, humped, dipped, banked or cambered for 2 or 4 lane motor racing and will work with any AFX car.



# AURORA<sup>®</sup> AFX<sup>®</sup>

World Championship  
Motor Racing

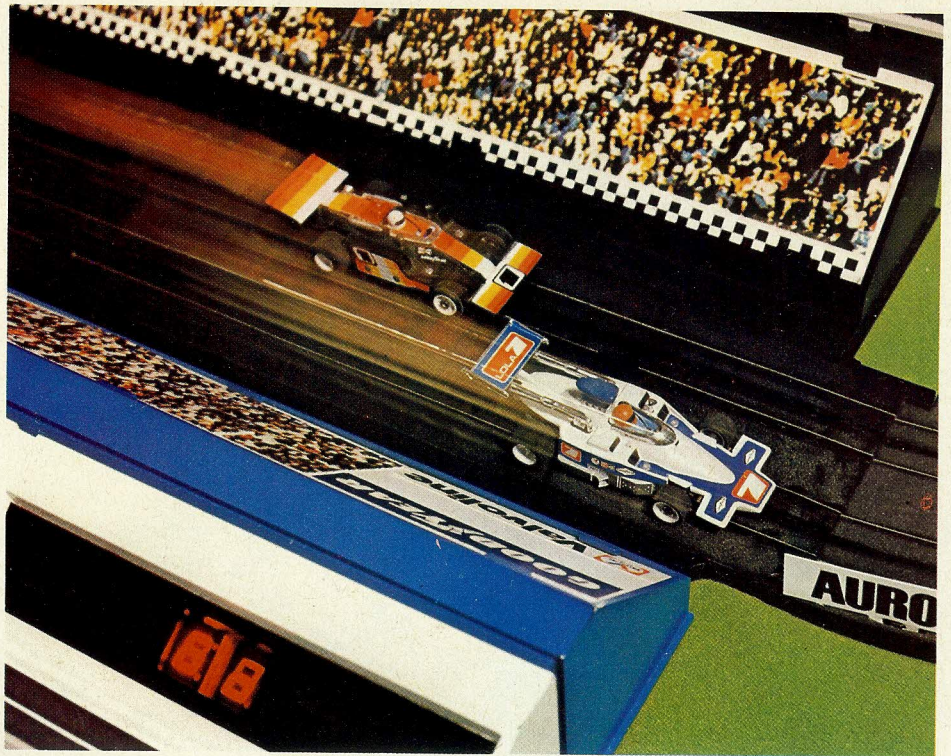
# Data Race

**NEW**

Data Race is truly a product of the computer age and puts Aurora 1st again — with electronic racing to

give you even more realism. Data Race is comprised of two elements:

- Computerised motor racing programme which
  - I Times and counts laps
  - II Programmes races (up to 95 laps)
  - III Measures "Fuel consumption"
  - IV "Re-fuels" (up to 95 gallons)
- Electronic sound synthesizer — generates 6 different motor racing sounds including
  - I Motor racing sound for each car
  - II Start count-down and gun shot start
  - III Low fuel warning
  - IV "Out-of-fuel" signal
  - V "Re-fuel" signal
  - VI "Victory salute" for race winner



Drivers can check "fuel" remaining — if you run low you must make a pit stop to refuel. Data Race will provide at any time the following information.

- I Laps completed
- II Time of last lap
- III Time of fastest lap
- IV "Fuel" remaining

# AURORA<sup>®</sup> AFX<sup>®</sup> ACCESSORIES

Aurora Accessories add extra fun and excitement to your World Championship Motor Racing.

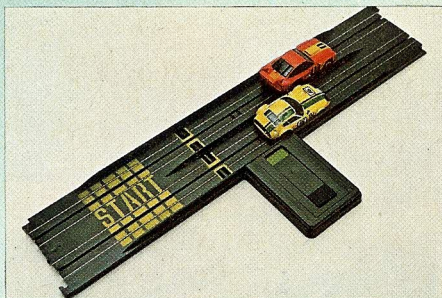


## 1495 Electronic Timer and Lap Counter

Times laps with split-second accuracy. LED display. Also counts laps.

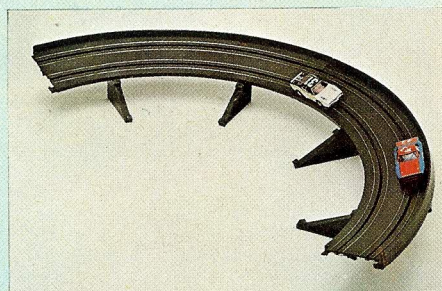
## 1589 Combination Tool and Circuit Tester

The tester glows if electrical contact on track is good, check the most complex layouts in seconds without dismantling, also contains handy screwdriver and spanner.



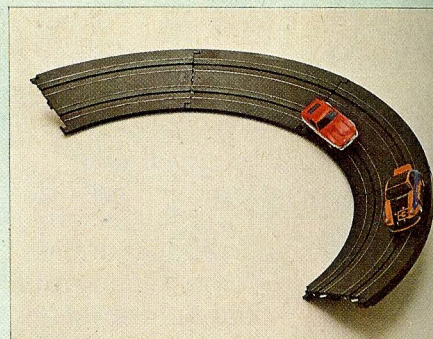
## 2550 Starter Track

Perfect starts every time with the 380mm/15" starter track, rev-up cars on the startline, release the switch and away they go.



## 2545 305mm/12" Radius Banked Curve Set

Two high speed 305mm/12" radius banked curves with built-in guard rails complete with track supports.



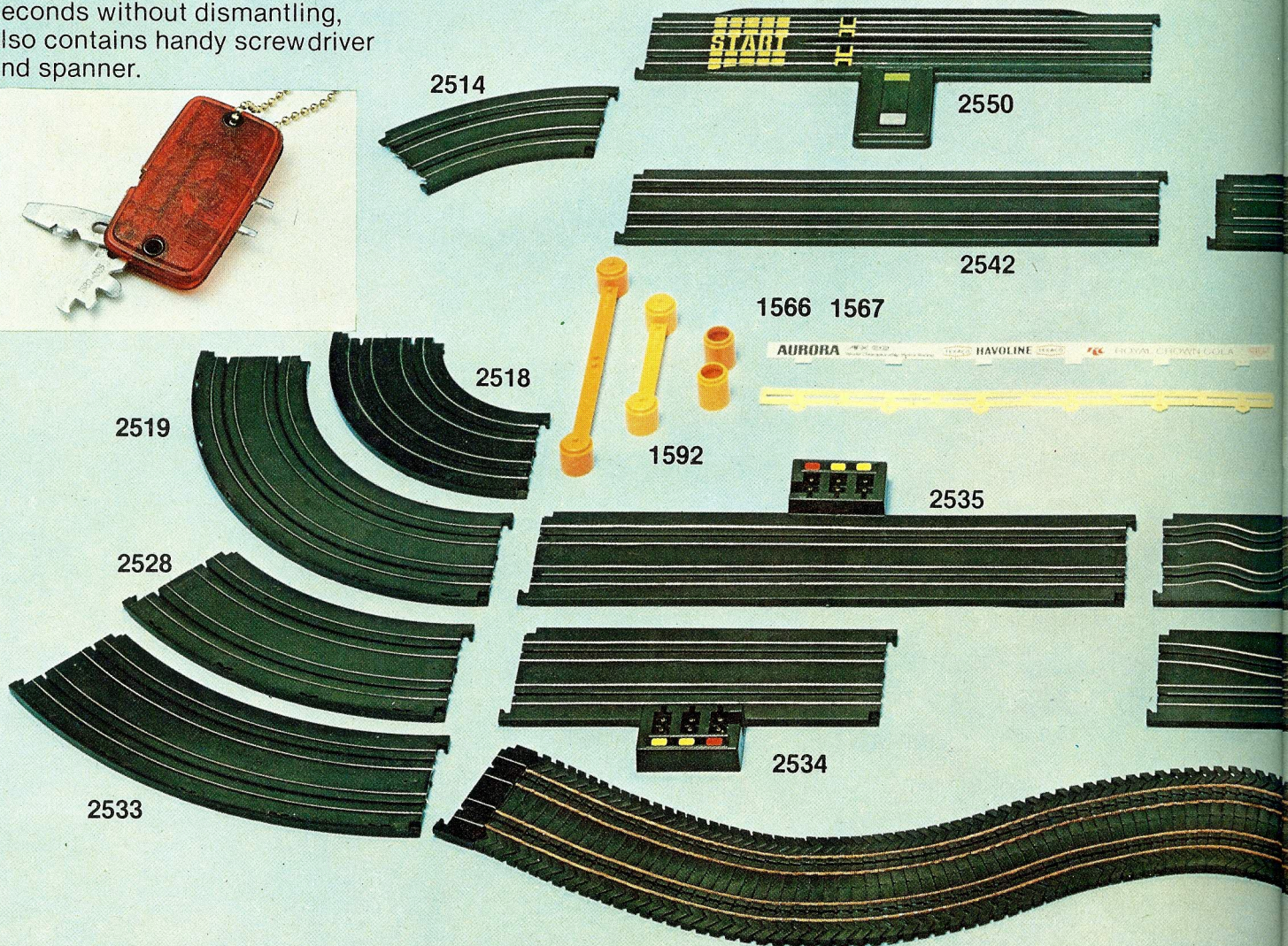
## 2467 228mm/9" Radius Banked Curve Set

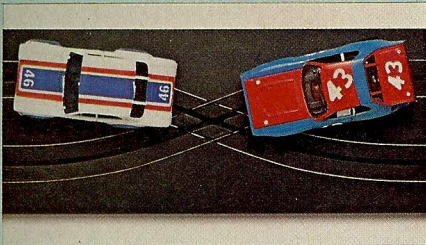
Four-piece 228mm/9" radius banked curve, can be used alone or inside the 305mm/12" radius banked curve.



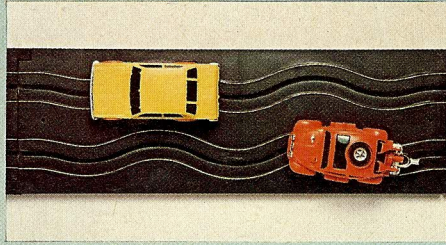
## 9493 Lap Counter

Automatically counts up to 60 laps on each lane — can easily be reset to Zero.

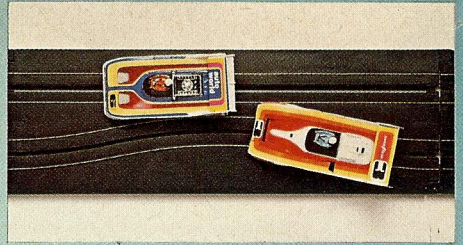




2524  
228mm/9" Criss-Cross (pair)



2501  
228mm/9" Wiggle



2539  
228mm/9" Squeeze

2501  
228mm/9" Wiggle

2514  
228mm/9" Radius Curve ( $\frac{1}{8}$ )

2517  
228mm/9" Straight

2518  
153mm/6" Curve ( $\frac{1}{4}$ )

2519  
228mm/9" Radius Curve ( $\frac{1}{4}$ )

2524  
228mm/9" Criss-Cross (pair)

2527  
153mm/6" Straight

2528  
305mm/12" Radius Curve ( $\frac{1}{8}$ )

2533  
380mm/15" Radius Curve ( $\frac{1}{8}$ )

2534  
228mm/9" Terminal Track

2535  
380mm/15" Terminal Track

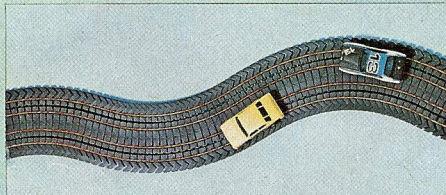
2539  
228mm/9" Squeeze

1592  
**Bridge Beams and Extensions**

Modular beams and extensions allow complex multi level layouts to be built quickly and simply.

1566 and 1567 **Trackside Banners and Guard Rails**

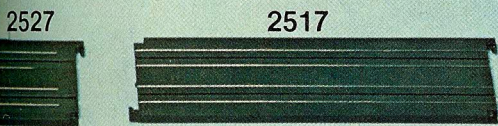
Authentic guard rails and banners easily snap into slots in the track for safe cornering.



2590  
912mm/36" Flextrack\*



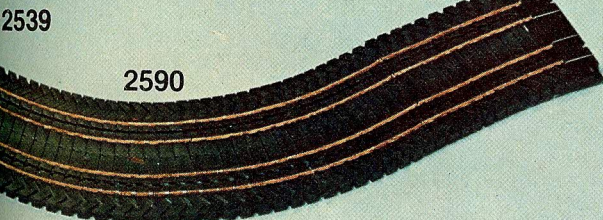
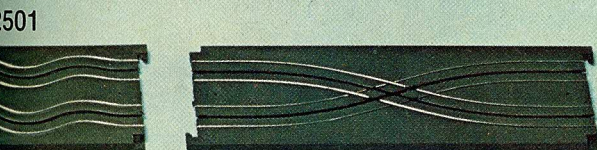
1436 Aurora® Russkit®  
**Variable Speed Controller**  
Finger-tip control for instant response, allows consistently fast lap times to be achieved.



**Banked Curve**

2545  
305mm/12" Two piece High Speed Curve with Supports

2467  
228mm/9" Four piece High Banked Curve



(TM) Indicates a Trade Mark of Aurora Products USA. Due to the possibility of material shortage or variation, Aurora reserve the right to alter the specification or the manufacturing source of any items illustrated or specified in the Company's literature. Certain items within this catalogue are the subject of worldwide patent applications and patents. Aurora Products USA 1979.

**Building your  
 own circuits**

**KEY**

- A 2542 380mm/15" Straight
- B 2517 228mm/9" Straight
- C 2533 380mm/15" Radius Curve ( $\frac{1}{8}$ )
- D 2519 228mm/9" Radius Curve ( $\frac{1}{4}$ )
- E 2528 305mm/12" Radius Curve ( $\frac{1}{8}$ )
- F 2524 228mm/9" Criss-Cross
- G 2514 228mm/9" Radius Curve ( $\frac{1}{8}$ )
- J 2467 228mm/9" Four piece High Banked Curve
- K 2545 305mm/12" Two piece High Speed Curve



**ZOLDER**

The Belgian Grand Prix in 1978 gave Mario Andretti the first victory for the Lotus Mk 4, but it was his Swedish team mate Ronnie Peterson who captured fastest lap.

Record: Ronnie Peterson 1978,  
 Lotus J P S Mk 3  
 1 min 33.23 sec.  
 114.66 mph (185.91 kph)



**SILVERSTONE**

Now the world's fastest Grand Prix circuit where in 1977 James Hunt delighted his fans by winning brilliantly, driving the McLaren M26.  
 Record: James Hunt in 1976 in McLaren M23  
 1 min. 18.81 sec (215.5 km/h.)

