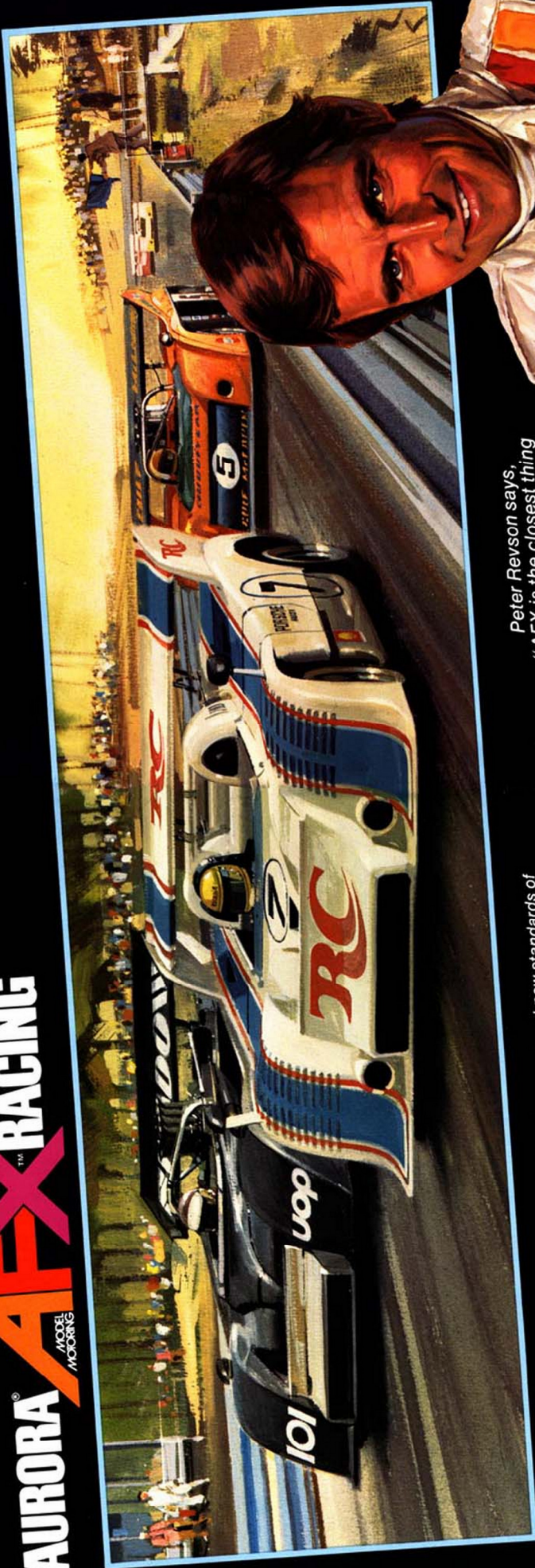


74 TAURORA AFX RACING



AURORA **AFX** MODELS
MOTORING ELECTRIC HO SCALE **RACING**



Peter Revyson says,
"AFX is the closest thing
to real racing."

Aurora, world leader in Model Motoring since 1960, continues to set new standards of excellence with AFX—Aurora Factory Experimentals. AFX is unmatched for speed, control and performance—right out of the package! AFX precision-engineered cars run so fast they leave the others on the line.

AFX Electric HO Racing Sets provide unequalled control, performance and value.

Plus a host of exclusive major features:

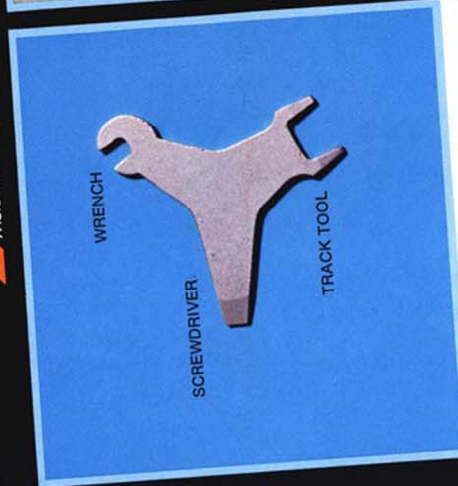
- ... AFX Speed-Lok™ High Performance Track
- ... AFX Russkit Pro-Style Speed Controls
- ... AFX Safety Wall-Pak™
- ... Lap Counter
- ... Automatic Starter Track
- ... Lap Timer
- ... and New Grand Stand Revamatic™ Sound Unit

These features are only part of the world's largest selection of HO track and accessories.

All backed with Aurora's guarantee of quality and performance. With over 65,000,000 Aurora HO electric cars manufactured since 1960—it's easy to understand why AFX Model Motoring outsells all others combined by more than 2 to 1.



AURORA® AFX™ ELECTRIC HO SCALE RACING EXCLUSIVE FEATURES

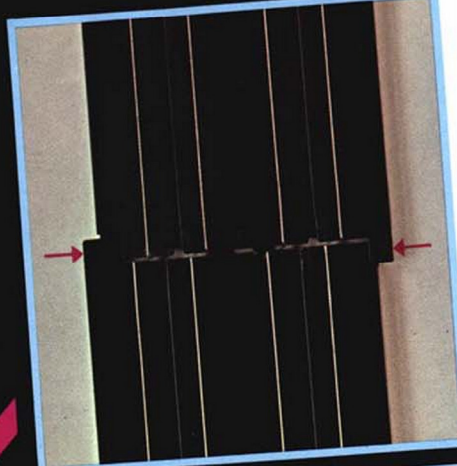


WRENCH

SCREWDRIVER

TRACK TOOL

AFX QUIKEE-LOK™
The new Quikee-Lok™ makes assembling—and taking apart—AFX Speed-Lok™ track easier than ever! Handy screwdriver and wrench is perfect for adjusting AFX cars and tracks.



AFX SPEED-LOK™ TRACK
Easy-to-assemble! Simple position two track sections as shown, with end tabs partially hooked.



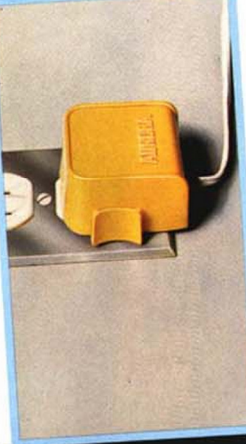
TO OPEN TRACK
Holding track with one hand, insert the Quikee-Lok into the track slots. Twist firmly in the direction shown (clockwise) and the track will snap open.



TO ASSEMBLE
Holding the Quikee-Lok firmly, insert it straight into the track slots. Twist firmly in the direction indicated (counterclockwise) until the track snaps into place.



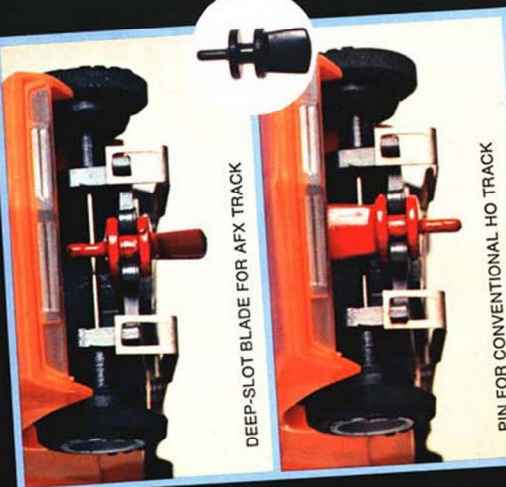
SUPER-FAST AFX CARS
High-speed, easy-to-control AFX cars race like the real ones. So fast—there's nothing else in sight. Precision-engineered for unequalled high performance.



AFX WALL-PAK™
Keeps the power in the wall—not on the floor. Safe, low voltage. UL listed. Comes with pre-wired clip-on terminal attached in AFX sets.



AFX RUSSKIT SPEED CONTROLS
The full-range pro-style controller. Trigger action gives lightning fast response and positive control at all times.



DEEP-SLOT BLADE FOR AFX TRACK

PIN FOR CONVENTIONAL HO TRACK

AFX REVERSIBLE GUIDE PINS
Exclusive! Reversible—for every racing condition. Blade side provides an extra handling edge on AFX High Performance extra-deep-slot track. (For old style Aurora HO track, simply reverse and use the pin side).



AFX HIGH PERFORMANCE TRACK WITH EXTRA-DEEP SLOTS

AFX HIGH PERFORMANCE TRACK
Rugged. Easy-to-assemble. With the deepest slots in HO racing. Special "slot wedge" design at track ends eliminates guide pin snag where tracks join. Provides extra smooth and quiet high-speed racing action.

AURORA MODEL HOORING **AFX** ELECTRIC HO SCALE **RACING**

**Peter Revson
PHOENIX 500 RACE SET**



ALTERNATE LAYOUT



NEW PIT STOP GARAGE AND BILLBOARD RETAINING WALL



AURORA MODEL HOORING **AFX** ELECTRIC HO SCALE **RACING**

**Peter Revson
PIT ROW SPEEDWAY RACE SET**



NEW PIT STOP GARAGE, BILLBOARD RETAINING WALLS AND PIT KIT CASE



ALTERNATE LAYOUT

(Contents of Pit Kit case not included)

2212 15' OF RACING IN 4½' X 2¾'

Track Footage: 15'2"

Layout Size: 56" x 33"

Carton Pack: 4

Carton Wgt.: 26 lbs.



A rugged race course with high level action—over 15' of curves, hills and high speed straightaways! 2 super-fast AFX Cars, AFX High Performance Track, 2 Pro-style Russkit Speed Controls, AFX Safety Wall-Pak, Guard Rails, Trestles, Racing Oil and Quikkee-Lok. Alternate layout is a challenging multi-level race course.

AURORA MODEL HOORING **AFX** ELECTRIC HO SCALE **RACING**

**Peter Revson
PHOENIX 500 RACE SET**



ALTERNATE LAYOUT



NEW PIT STOP GARAGE AND BILLBOARD RETAINING WALL



Track Footage: 11' x 8"

Layout Size: 41" x 27"

Carton Pack: 4

Carton Wgt.: 20 lbs.



2211 11½' OF RACING IN 3½' X 2'

Multi-level racing with 2 super-fast AFX Cars and over 11½ feet of AFX High Performance Track. Comes with 2 pro-style AFX Russkit Speed Controls, AFX Safety Wall-Pak, Guard Rails, Trestles, Racing Oil and Quikkee-Lok. Converts to a challenging double figure "8" two level over and under race set.

AURORA ACCELS
MOTORCARS **AFX** ELECTRIC HO SCALE **RACING**

**Peter Revson
RACEMASTER CHALLENGER RACE SET**



2213

20½' OF RACING IN 5' X 2¾'

Track Footage: 206'

Layout Size: 62" x 33"

Carton Pack: 4

Carton Wgt.: 30 lbs.

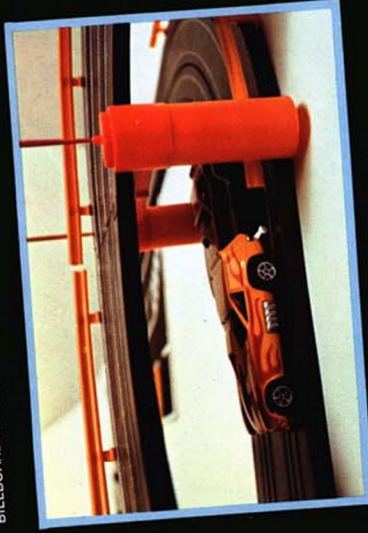
Double the action—Speedway and Dragstrip! Challenging over and under racing, 20½' of AFX High-Performance Track with tight squeezes, twisting curves, grueling hills and long straightaways. You can also set up the exciting new Drag Section, Tight, twisting curves are the unique features of this drag strip. Complete with 2 AFX Racers, 2 matched Russkit Pro-Style Speed Controls, AFX Safety Wall-Pak, Guard Rails, Bridge posts, Flags and Quikkee-Lok.



NEW PIT STOP GARAGE



BILLBOARD RETAINING WALLS



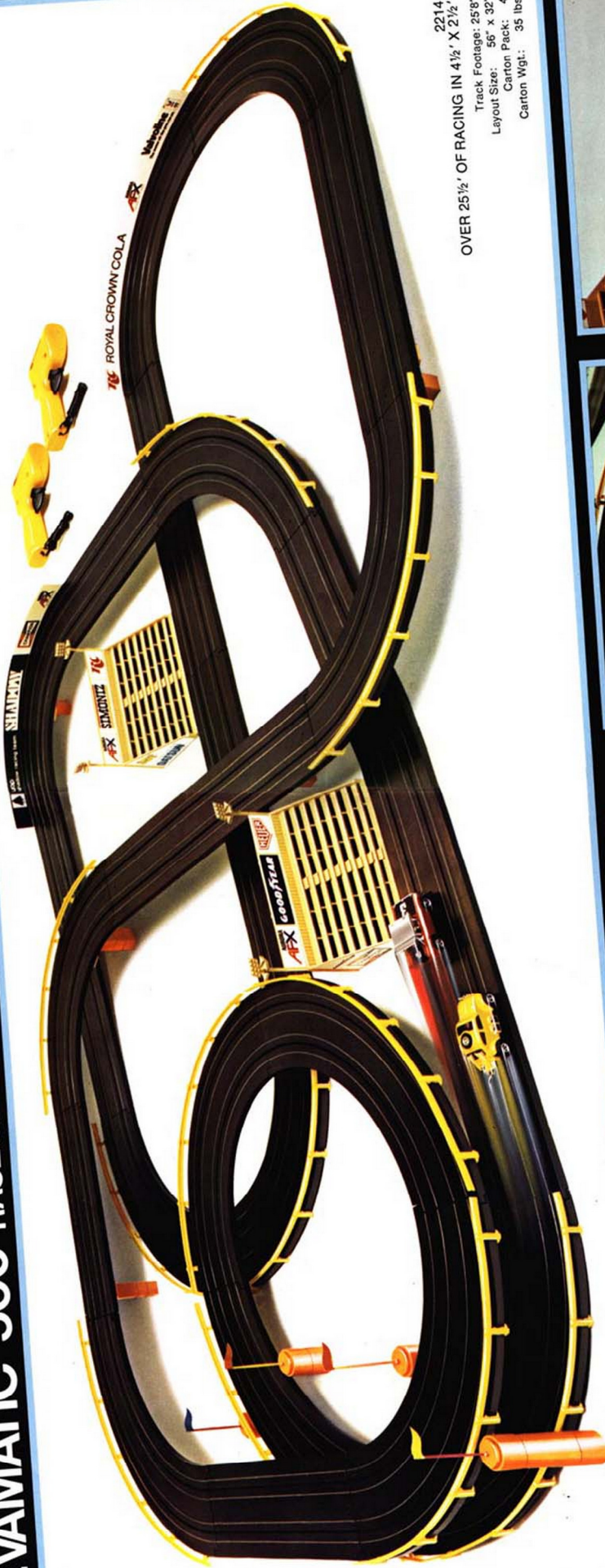
ALTERNATE LAYOUT

XMAS TREE STARTER AND AUTOMATIC FINISH LINE MARKER

AURORA **AFX** MODEL RACING
ELECTRIC HO SCALE

**Peter Revson
REVAMATIC 500 RACE SET**

**SPECIAL FEATURE!
REVAMATIC™ SOUND**
GRANDSTANDS THAT SOUND
LIKE REAL RACING ENGINES



2214
Track Footage: 258'
Layout Size: 56" x 32"
Carton Pack: 4
Carton Wgt.: 35 lbs.



A high-speed multi-level set loaded with racing action. 2 Super fast AFX Cars race on AFX High Performance Track, guided by 2 Russkit Trigger Action Speed Controllers, and the super sounds of the Revamatic Grand Stands. Also includes Guard Rails, Safety Wall-Pak, Racing Oil, Modular Bridge Beams, Trestles, Racing Flags, and Quik-Lok.



GRAND STAND REVAMATIC SOUND UNITS AND BILLBOARD RETAINING WALL



AURORA[®] **AFEX**[™] RACING
MODEL MOTORING

ELECTRIC HO SCALE

Peter Revson CALIFORNIA NATIONAL RACE SET

BANKED CURVE/AUTOMATIC LAP COUNTER/AUTOMATIC STARTER TRACK AND BILLBOARD RETAINING WALL.

2215
27½' OF RACING ACTION IN 8' X 3½'
Track Footage: 27'6"
Layout Size: 95" x 38"
Carton Pack: 3
Carton Wgt.: 29 lbs.



Drivers—Start your engines! Get set! Go! Aurora's new Automatic Starter Track gets you off the line together. The new Lap Counter automatically lets you know where you stand against the field on 27½' of racing action. Comes with 2 Pro-style Russkit Speed Controllers, 2 AFX Super-fast Cars, Guard Rails, Trestles, AFX Safety Wall-Pak, Racing Oil and Quikkee-Lok.

AURORA
MOORE
 MORRIS
AFX
THE
RACING
ELECTRIC HO SCALE

**Peter Revson
 RALLYE 4+4 RACE SET**



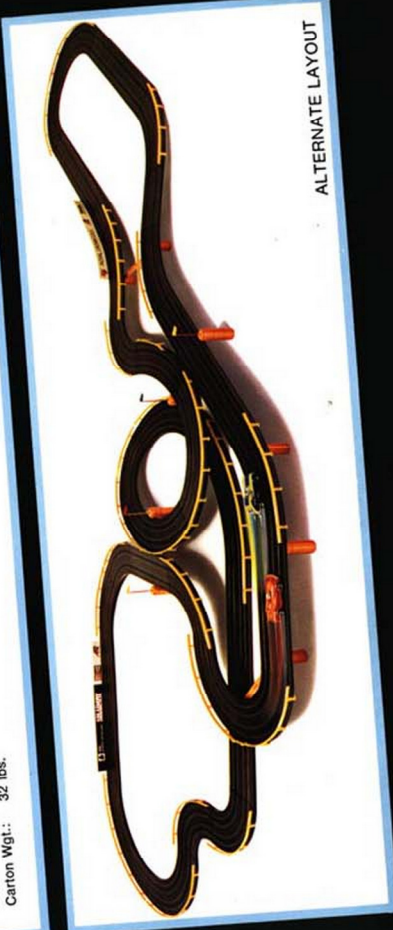
2216
 27" OF 2 LANE RACING IN 4 1/2" X 4"
 Track Footage: 13'6"
 Layout Size: 56" x 48"
 Carton Pack: 3
 Carton Wgt.: 32 lbs.



NEW BILLBOARD RETAINING WALL.



Four on the floor competition. Four super-swift AFX Speedsters and a four lane Speedway for excitement and action! Side by side racing suddenly splits off into two directions.
 Contains UL Listed Power Pak with on-off switch engineered for peak performance with 4 AFX Cars and 4 AFX Russkit Speed Controls, plus Modular Bridge Posts, Guard Rails, Flags, Racing Oil and Quike-Lok. This set also converts to 27" of challenging racing thrills that match your skill against winding curves and tricky straightaways in super competition.

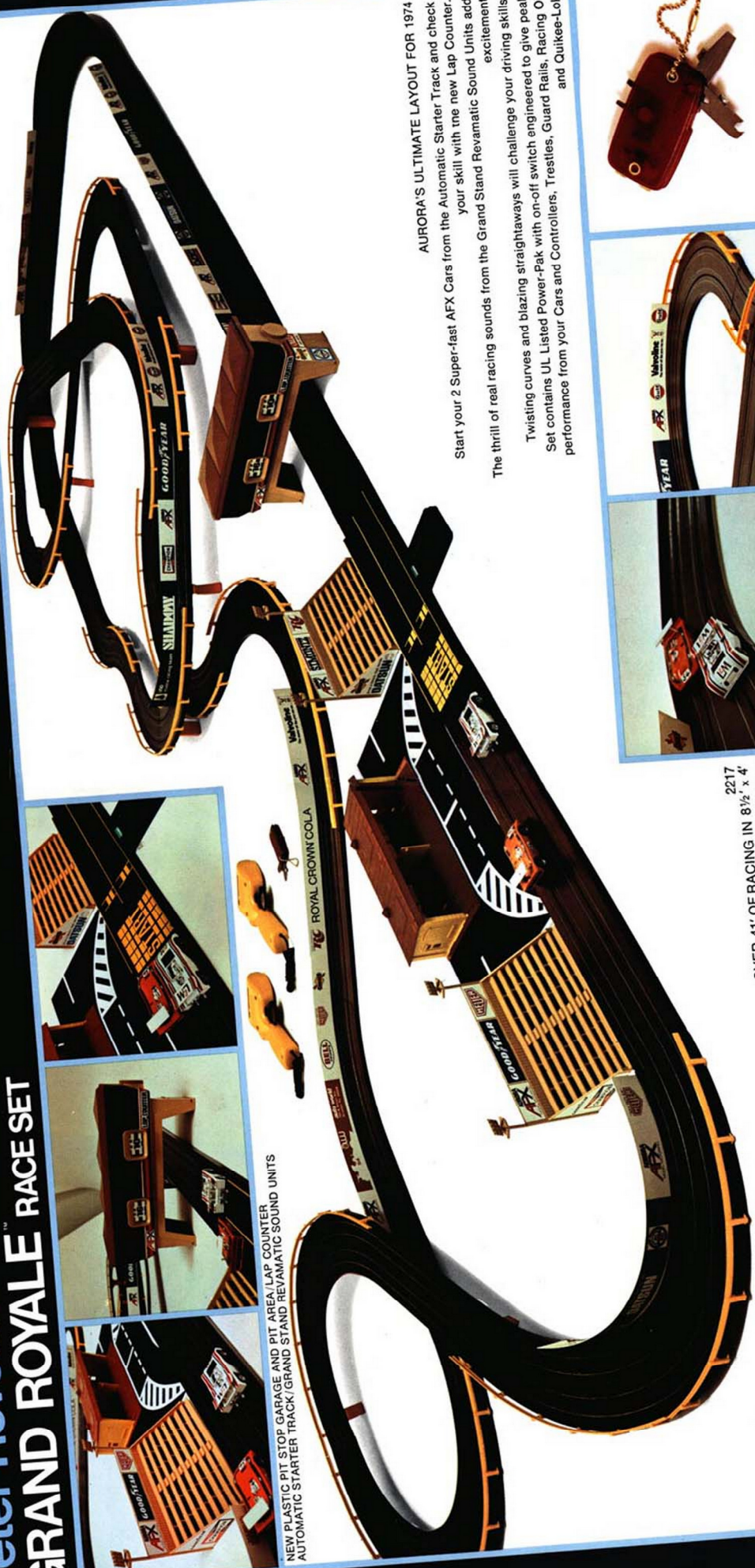


ALTERNATE LAYOUT

ELECTRIC HO SCALE
AURORA **AFX** **RACING**
MODEL MOUNTING

Peter Revson
GRAND ROYALE RACE SET

SPECIAL FEATURE!
REVAMATIC™ SOUND
 GRANDSTANDS THAT SOUND
 LIKE REAL RACING ENGINES



NEW PLASTIC PIT STOP, GARAGE AND PIT AREA, LAP COUNTER
 AUTOMATIC STARTER TRACK/GRAND STAND REVAMATIC SOUND UNITS

AURORA'S ULTIMATE LAYOUT FOR 1974
 Start your 2 Super-fast AFX Cars from the Automatic Starter Track and check your skill with the new Lap Counter.
 The thrill of real racing sounds from the Grand Stand Revmatic Sound Units add excitement.
 Twisting curves and blazing straightways will challenge your driving skills.
 Set contains UL Listed Power-Pak with on-off switch engineered to give peak performance from your Cars and Controllers, Trestles, Guard Rails, Racing Oil and Quikee-Lok.



BILLBOARD RETAINING WALLS/COMBINATION TRACK TOOL AND CIRCUIT TESTER.

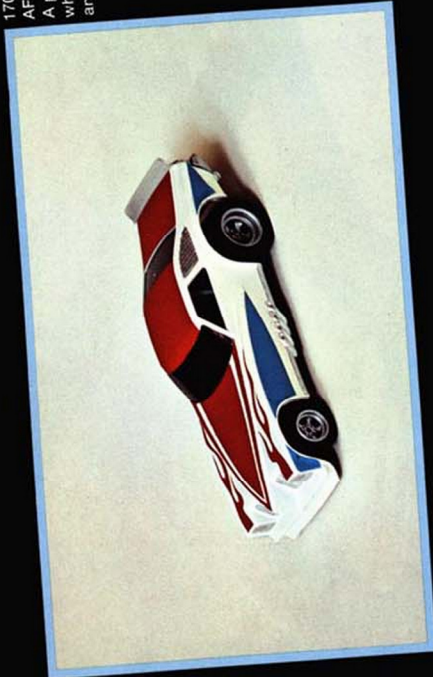
2217
 OVER 41' OF RACING IN 8½" x 4"
 Track Footage: 41'4"
 Track Layout: 102" x 42"
 Carton Pack 3
 Carton Wgt.: 43 lbs.

NEW AFXTM CARS for '74



1746
AFX "29" MODEL "A" WOODY
The classic Ford Station Wagon
updated with mag's.
Wide tires all the way around.

1702
AFX GRAND AM FUNNY CAR
A popular "AA" fuel funny car
which features mag wheels
and wide rear tires.



1747
AFX PORSCHE 917-10K CAN-AM
1972 Can-Am Champion.
This year sporting R.C. Cola's
colors. For 1973 it is definitely a
contender for the Can-Am
championship.



1745
AFX DATSUN BAJA PICK-UP
This rugged pick-up was its class
winner in the tough 1973 Baja 500.



1703
AFX CORVETTE "A" PRODUCTION
This "A" production sports Corvette
is one of the toughest competitors
in its class.



1748
AFX DODGE STREET VAN
A popular street machine which
features "mag" wheels.
Wide tires all the way around.