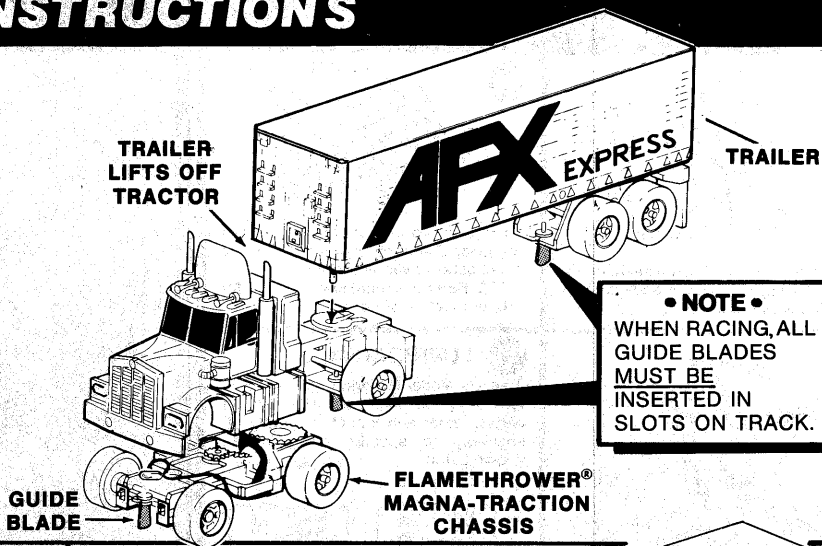


# AFX® 18 WHEELERS INSTRUCTIONS

Aurora's AFX® fully detailed 18 Wheelers adds another new dimension to H.O. Scale Model Motoring.

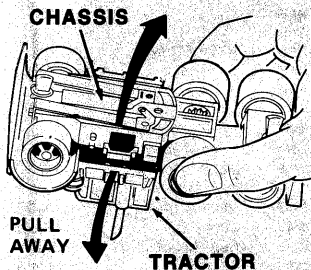
- 18 Wheelers are basically a AFX Tractor and Trailer mounted on a AFX Magna-Traction Flamethrower® chassis.

● **IMPORTANT** ●  
**MAINTENANCE INSTRUCTIONS  
 AND REPLACEMENT PARTS  
 ARE SHOWN ON REVERSE SIDE.**



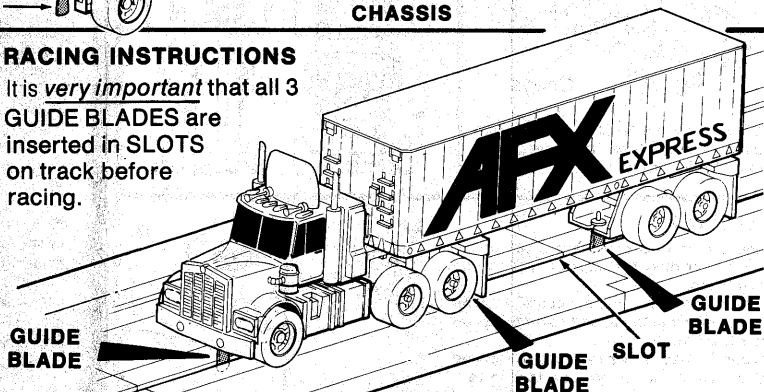
## HOW TO REMOVE TRACTOR FROM CHASSIS

Hold rear wheels of chassis as shown. Then pull one side of Tractor away from chassis as you lift chassis out. When replacing chassis, place Bulb back into hole under front of Tractor, pull side of Tractor out slightly and snap chassis into place.

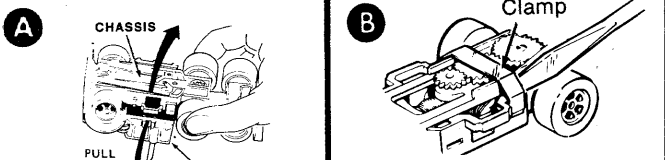


## RACING INSTRUCTIONS

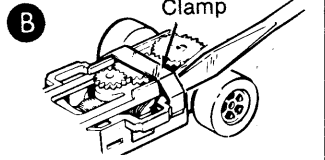
It is *very important* that all 3 **GUIDE BLADES** are inserted in **SLOTS** on track before racing.



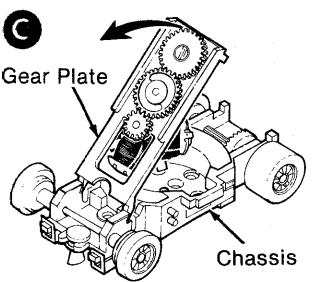
# MAINTENANCE INSTRUCTIONS



To remove body hold rear wheels firmly and pull away one side of body slightly until it clears the chassis.

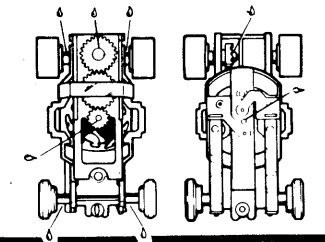


To replace internal parts first remove the Gear Clamp by prying it off with a small screwdriver as shown. NOTE: Refer to exploded view of car for proper location of parts.



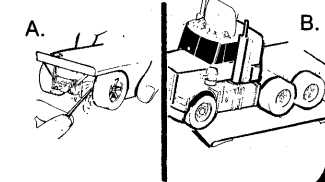
Lift the Gear Plate and Armature off the chassis. Notice how the Gear Plate pivots at the front of chassis.

**D LUBRICATION**  
Aurora's Model Motoring Special Oil is formulated to help your AFX car run better, faster and smoother. Apply oil sparingly to specific oiling points shown below.

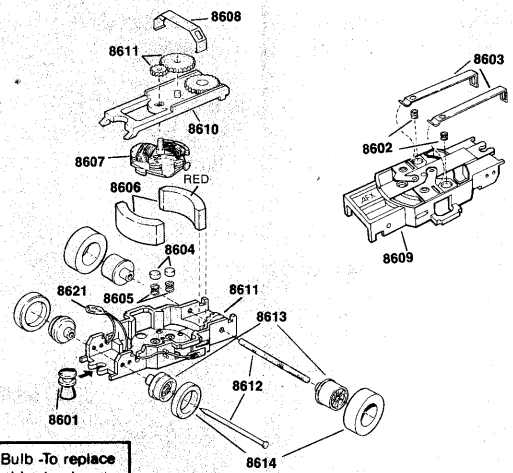


## CLEANING

- Use a toothpick or tweezers to remove any lint or dust that may collect around rear axles.
- Clean tires by placing a piece of Tape on table, sticky side up, and rolling tires on it a few times.
- Clean Pick-Up Shoes regularly by rubbing them with a pencil eraser a few times.



# AFX FLAMETHROWER PARTS IDENTIFICATION



**8621 - Light Bulb -To replace you must resolder to chassis.**

OLD Part Nos.	NEW Part Nos.	DESCRIPTION	OLD Part Nos.	NEW Part Nos.	DESCRIPTION
8703 or 8705	8601 or 8602	Guide Pin Pick-Up Shoe Springs (pr.)	8711	8610	Gear Plate and Cluster Gear
8775 or 8777	8603 or 8604	Pick-Up Shoes (pr.) Motor Brushes (pr.)	8712	8611	14-Tooth Idler Gear 24-Tooth Idler Gear
8773	8605	Motor Brush Springs (pr.)	8714	8612	15-Tooth Crown Gear Front Axle Rear Axle
8771 or 8772	8606 or 8607	Magnets (pr.) Armature	8715 or 8716	8613	Front Wheels (pr.) Rear Wheels (pr.)
8772 or 8770	8608 or 8609	Gear Plate Clamp Chassis	8717 or 8720	8614	Front Tires (pr.) Rear Tires (pr.)