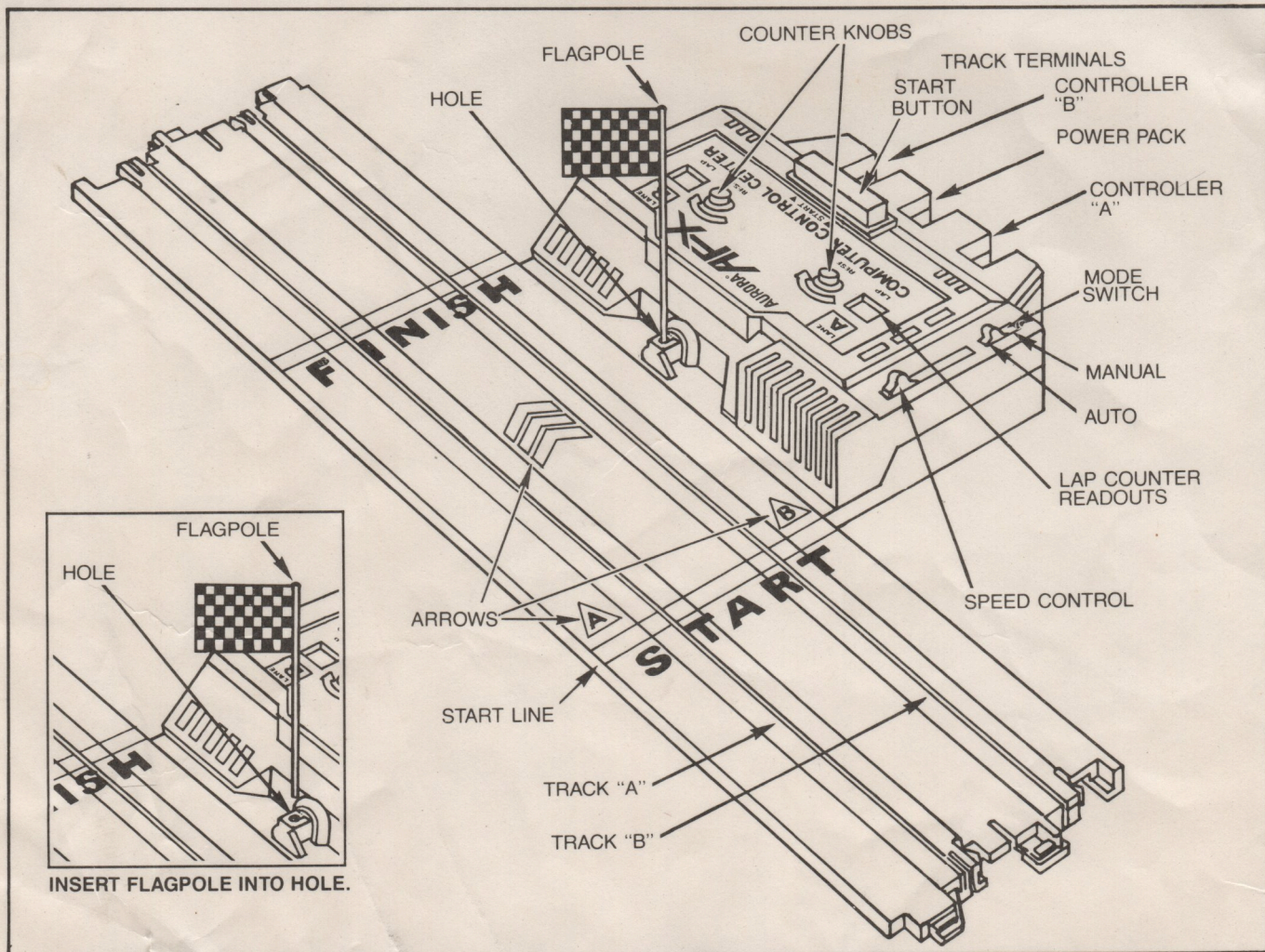


# GHOST RACER®

## COMPUTER CONTROL CENTER INSTRUCTIONS



### CONNECTING TO LAYOUT

Use the COMPUTER CONTROL CENTER like a standard 15" Terminal Track. Connect it as you would any other AFX® track, as shown in your Owner's Manual.

### CONNECTING POWER PACK

Connect the POWER PACK PLUG to the center TRACK TERMINAL. The ARROW on POWER PACK PLUG must point in the same direction as the ARROWS on the COMPUTER CONTROL CENTER track.

### 1. COMPUTER RACING MODE

In the Computer Racing Mode, the COMPUTER CONTROL CENTER controls the speed of the GHOST RACER® car. You drive the second car in a race against the GHOST RACER car.

#### CONNECTING CONTROLLER

When Computer Racing, plug one Controller into the right-side TRACK TERMINAL "B". DO NOT CONNECT A SECOND CONTROLLER.

#### SETTING GHOST RACER SPEED

- 1) Turn both COUNTER KNOBS to "0".
- 2) Set the MODE SWITCH to "AUTO."
- 3) Place the GHOST RACER car on TRACK A (inside lane).
- 4) Slide the SPEED CONTROL to the middle of its range.
- 5) Press the START BUTTON. The GHOST RACER car will start to run and the FLAG will go down.
- 6) Adjust the SPEED CONTROL so that the GHOST RACER car keeps moving but does not leave the slot on the turns. If you later find that the GHOST RACER car is too fast or too slow, you can adjust the SPEED

CONTROL to the desired speed at any time.

NOTE: If the GHOST RACER car stops before you have completed setting the speed (after 10 laps), repeat Steps (1) to (6).

7) Now place the GHOST RACER car at the START LINE and reset the LAP COUNTER as in Step (1) above.

NOTE: LAP COUNTER KNOBS CAN BE SET FOR ANY DESIRED NUMBER OF LAPS BETWEEN 1 and 10.

### COMPUTER RACING

- 1) Make sure the MODE SWITCH is set to "AUTO."
- 2) Place the other car on TRACK B (outside lane) at the START LINE next to the GHOST RACER car.
- 3) Press the START BUTTON and the GHOST RACER car will take off. At the same time you press the START BUTTON, squeeze the trigger on the controller and the second car will take off.
- 4) The first car to make the preset number of laps on the counter will make the victory FLAG pop up. The GHOST RACER car will stop automatically.

### 2. REGULAR RACING MODE

- 1) Set MODE SWITCH to "MANUAL."
- 2) Plug second Controller into the left-side TRACK TERMINAL "A".
- 3) Each car will now respond to one of the Controllers. The SPEED CONTROL has no effect.
- 4) The LAP COUNTER can be used if desired, but neither car will stop when the flag pops up.

**TOMY®**