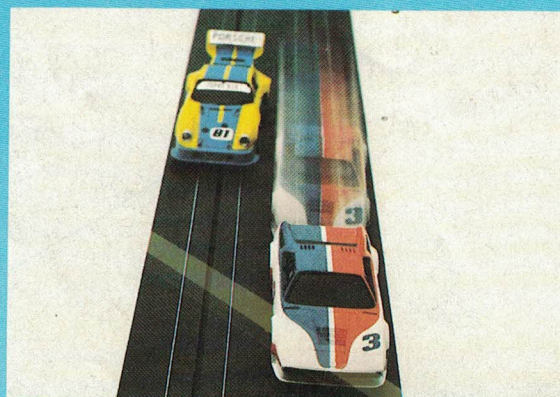


AURORA® AFX® SPEED PLUS EXTRA CONTROL

SPEED PLUS TURBO CONTROL

Pro Turbo 1675

Now all Aurora® AFX® cars can be "turbo-charged"! Press the "turbo" button for an instantaneous surge of extra power—just like a world champion racing driver!

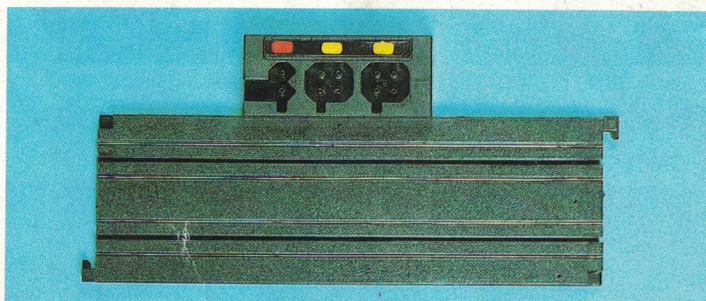
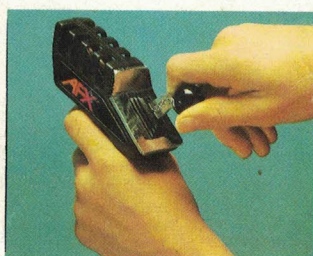
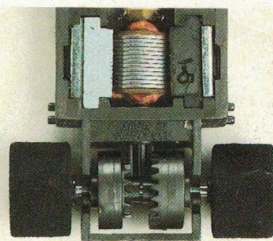


SPEED +++ GEAR CONTROL

speed shifter®

1470

Another "1st" for Aurora® AFX®—a precision "gear box." Shift from low to high gear on the straights and change down for maximum cornering speed. (Conversion Set includes 2 Speed Shifter® Controllers and cars with 228mm/9" special terminal track and straight track.)

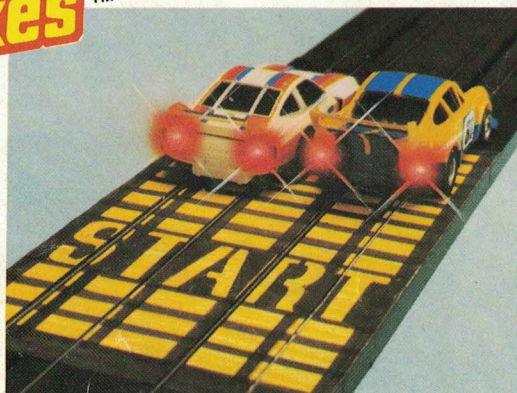
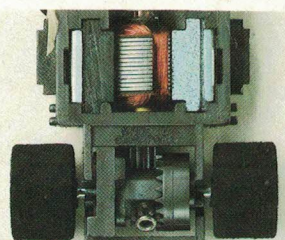


SPEED +++ BRAKE CONTROL

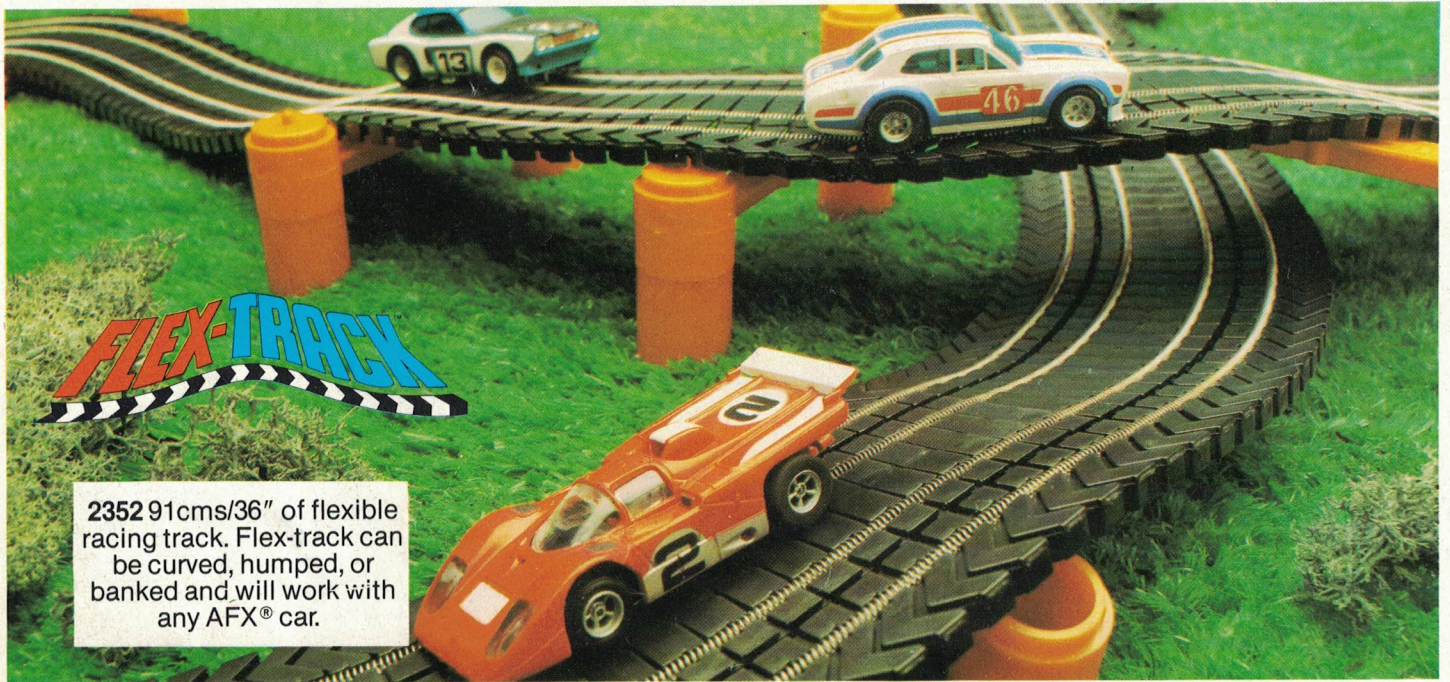
Blazin' Brakes™

1480

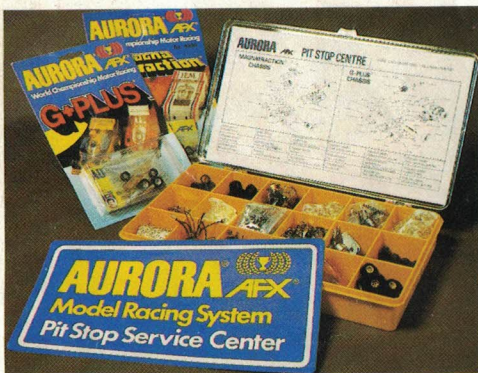
Another technical breakthrough—real "disc" brakes and brake lights plus the excitement and tension of a real racing start by "revving" the motor on the start-line and seeing the brake lights go "off" as the brakes are released. (Conversion Set includes 2 Blazin' Brakes™ Controllers and cars with 228mm/9" special terminal track and straight track).



AURORA® AFX®



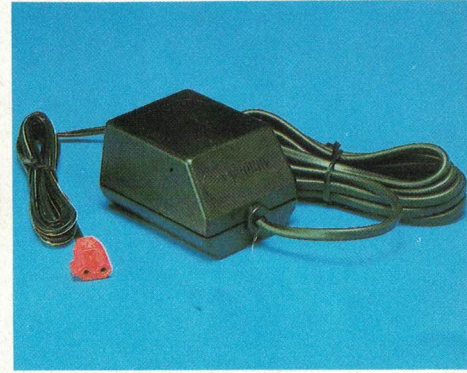
2352 91cms/36" of flexible racing track. Flex-track can be curved, humped, or banked and will work with any AFX® car.



All Aurora® AFX® vehicle parts can be serviced or replaced. Your stockist will be pleased to advise you.



9941 Pit-Stop Plus Selected "Pit-Stop" service parts with sections for car storage and protection, and Track Cleaning fluid (2596). Ensures improved electrical contact for higher speeds and road-holding with clean and dust free track.



9888 Aurora® AFX® Model Motor Racing Transformer. Input 220/240V AC. Output 12V DC.

TEAM TRUCKS WITH LIGHTS

Team and fuel transporters for night and day racing events. World Championship teams are sponsored by major tyre and oil companies—Aurora® AFX® —the closest thing to real motor racing!

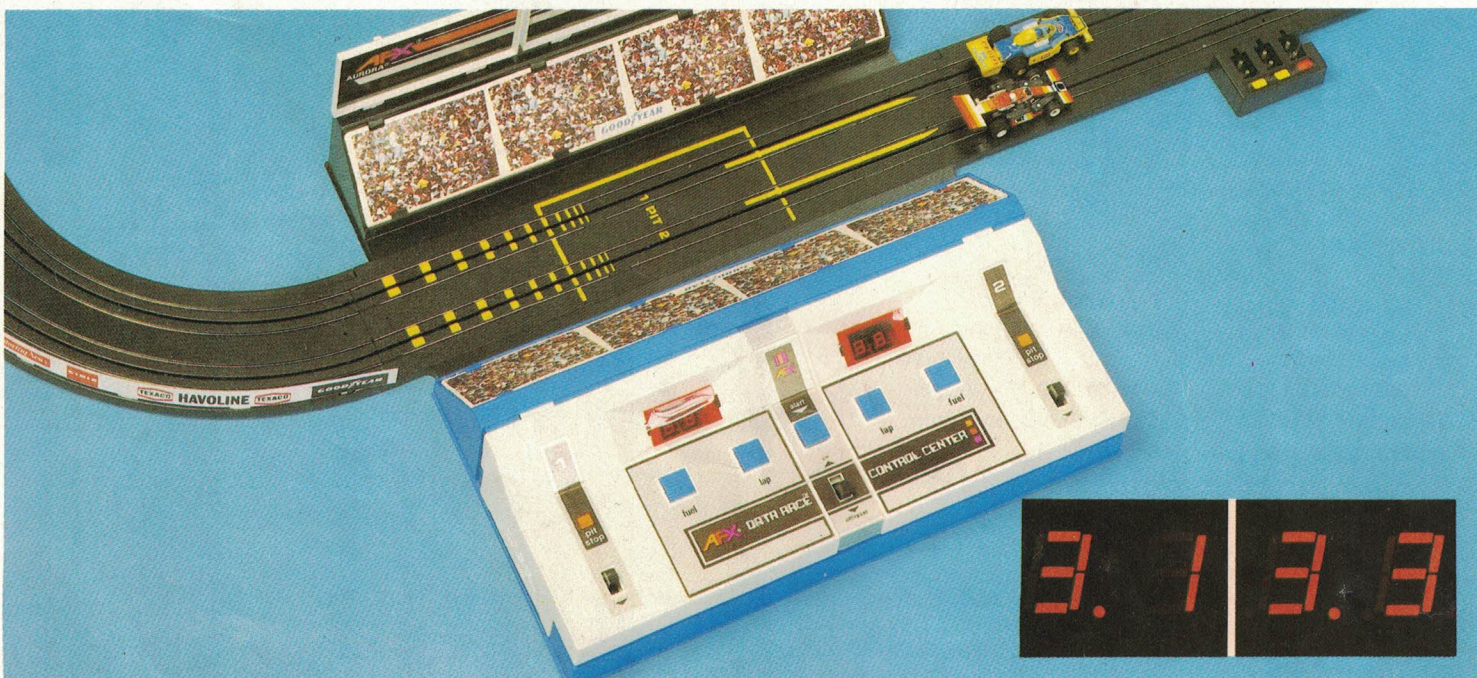


1158 GMC Astro Tanker (NEW)



AURORA[®] AFX[®] Data Race[™]

ELECTRONIC COMPUTER RACING



1430 Data Race[™] the fully programmable racing computer.

Programme Laps/Recall Previous Lap Time/Recall fastest lap of race
 Fuel monitor Pit Stop refuel mode
 LED Display—counts laps automatically/displays lap time/
 fastest lap/fuel level/refuel mode/race winner
 Electronic Sound Tower with six different modes:

Start countdown with gunshot start
 Motor racing sound for each car
 Low fuel warning
 Out of fuel signal
 Re-fuel signal
 Race end and victory to the winner



LAP COUNTING

9493 Lap Counter

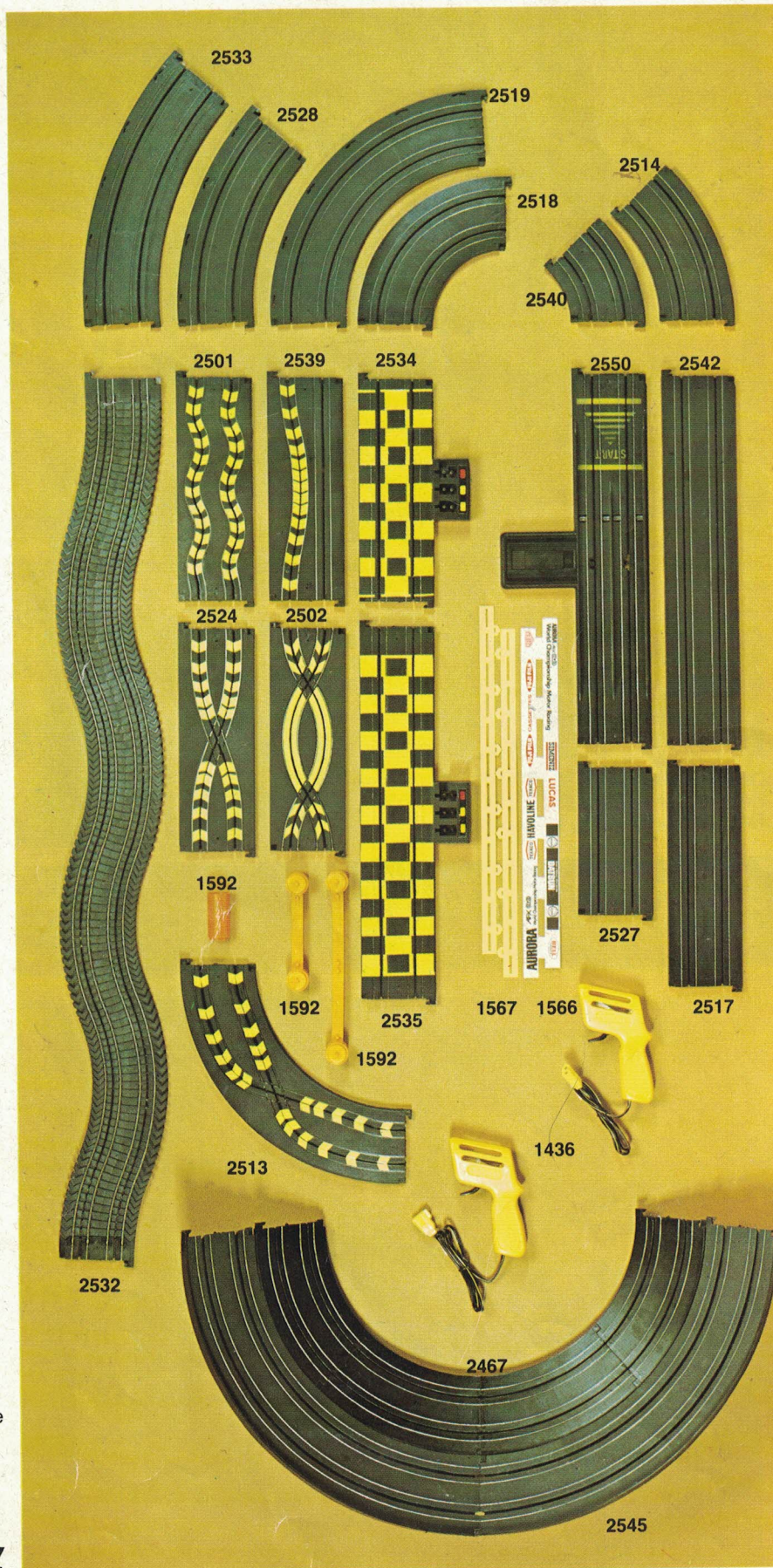
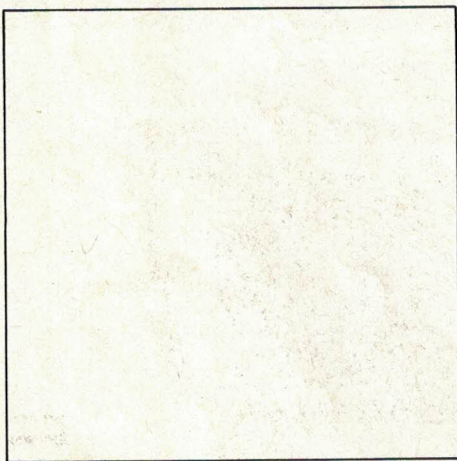
Automatically counts from 0 to 30 laps on each lane—can easily be reset to zero.



SPEED TRACK

- 2502 228mm (9") Double Criss Cross
- 2513 228mm (9") Radius Criss Cross (Pair)
- 2514 228mm (9") Radius Curve 1/8
- 2517 228mm (9") Straight
- 2518 153mm (6") Curve 1/4
- 2519 228mm (9") Radius Curve 1/4
- 2524 228mm (9") Criss Cross (Pair)
- 2527 153mm (6") Straight
- 2528 305mm (12") Radius Curve 1/8
- 2532 910mm (36") Flex Track
- 2533 380mm (15") Radius Curve 1/8
- 2534 228mm (9") Terminal Track
- 2535 380mm (15") Terminal Track
- 2539 228mm (9") Squeeze
- 2540 153mm (6") Radius Curve 1/8
- 2542 380mm (15") Straight
- 2550 380mm (15") Starter Track
- 2545 305mm (12") High Speed Bank Curve with supports
- 2467 228mm (9") Four piece Banked Curve
- 2501 228mm (9") Wiggle
- 1592 Bridge Beam 76mm (3")
- 1592 Bridge Beam 153mm (6")
- 1592 Bridge Beam Extension
- 1436 Russkit® Speed Controller
- 1566 Advertising Barrier
- 1567 Guard Rail

World-wide sales and service. Aurora Products are distributed and serviced throughout the world. This catalogue is printed in eight different languages. Set contents and accessory availability may vary from one country to another. Your nearest Aurora® AFX® stockist will be pleased to tell you which sets and accessories are available in your country.



TM® Indicate a Trade Mark of Aurora Products. Due to the possibility of material shortage or variation, Aurora reserve the right to alter the specification of the manufacturing source of any items illustrated or specified in the Company's literature. Certain items within this catalogue are the subject of worldwide patent applications and patents.

AURORA®

SPEED STEER®

SLOTLESS MODEL RACING

Speed Steer® introduces Hazards and Headlights—experience the incredibly high speed of the new lighted cars and trucks and enjoy the excitement of leap-frogging the Thrill Show, jumping the Hazard Canyon, as well as see-sawing and steering yourself out of—or into—disaster over the Breakneck Jump.

Racing, chasing and steering with Speed Steer® cars and trucks is action-packed and very exciting—the rapid response steering system—plus the ability to race very fast—provide countless opportunities for the skilful driver to overtake and win against all competition.



SUPER STUNTMAN GS250

The amazingly high speed of Stuntman cars, combined with their instantaneous response to the steering wheel and throttle control, provide many hours of chasing, racing and leap-frogging over the Thrill Show jumps.

SPEED STEER



6210 Porsche Can-Am (NEW)



6208 Shadow Can-Am (NEW)



6205 Dodge Magnum



6203 Porsche Turbo



6204 Thunderbird



6202 Corvette

PIT STOP

6941 Pit Stop Plus

Selected Pit Stop service parts and track cleaning fluid with sections for car storage and protection.

2596 Track Cleaner

Ensures improved electrical contact for higher speeds road-holding with clean and dust-free track.



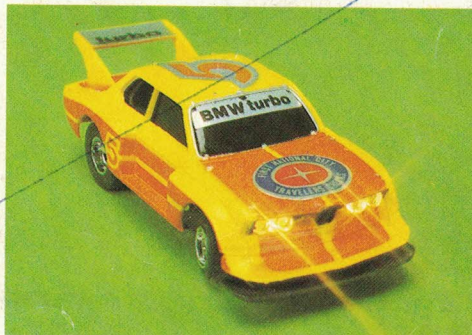
Pit Stop Service Centre parts available from your local Speed Steer® stockist.



6299 Road Blocker Police Car: (NEW)

SPEED STEER WITH LIGHTS

N/A



6211 Firebird (NEW)

SPEED STEER® TRUCKS

Speed Steer® Trucks are now even more authentic with the addition of real working headlights.



6285 Peterbilt® Convoy Truck (NEW)



6286 Peterbilt® Challenge Truck (NEW)



6298 GMC Astro Trailer Truck (NEW)



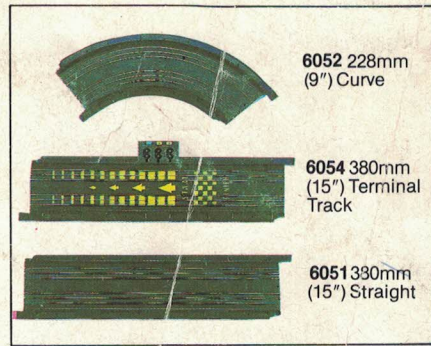
6278 GMC Astro Tanker (NEW)



6301 Chicane Track
Supports, Flag Set
and Pylons



6155 Hand Controller



6052 228mm
(9") Curve

6054 380mm
(15") Terminal
Track

6051 330mm
(15") Straight

(TM) Indicates a Trade Mark of Aurora Products. Due to the possibility of material shortage or variation, Aurora reserves the right to alter the specification or the manufacturing source of any items illustrated or specified in the Company's literature. Certain items within this catalogue are the subject of worldwide patent applications and patents.

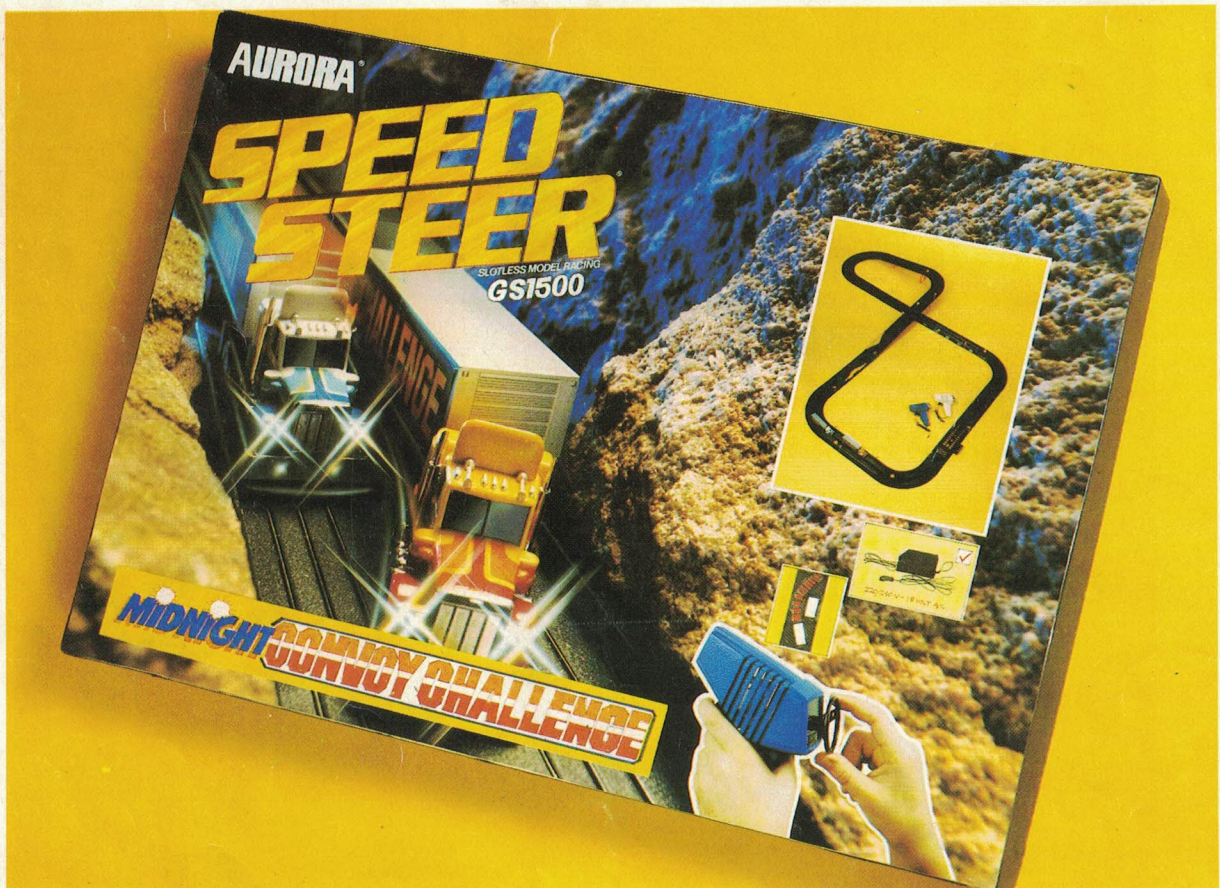
STOCKISTS NAME

World-wide Sales and Service Aurora products are distributed and serviced throughout the world. This catalogue is printed in 8 different languages. Set contents and accessory availability may vary from one country to another. Your nearest Aurora Speed Steer® stockist will be pleased to tell you which sets and accessories are available in your country.



Midnight Stunt Circus GS600

All the thrills and spills of crazy day and night chasing are available to reckless Stunt Circus drivers. The experienced and more skilful driver will endeavour to avoid see-sawing into trouble by steering around the Breakneck Jump and Hazard Canyon.



Midnight Convoy Challenge GS1500

Real truck racing arrived in the U.S. in 1980. In 1981 this spectacular new form of motor racing extended to the Dutch Grand Prix circuit and the world famous 24 Hours Le Mans circuit in France. New Speed Steer® trucks with headlights are fully equipped for day and night competitive racing—great skill and strong nerves are required to speed and steer to victory in the Convoy Challenge!