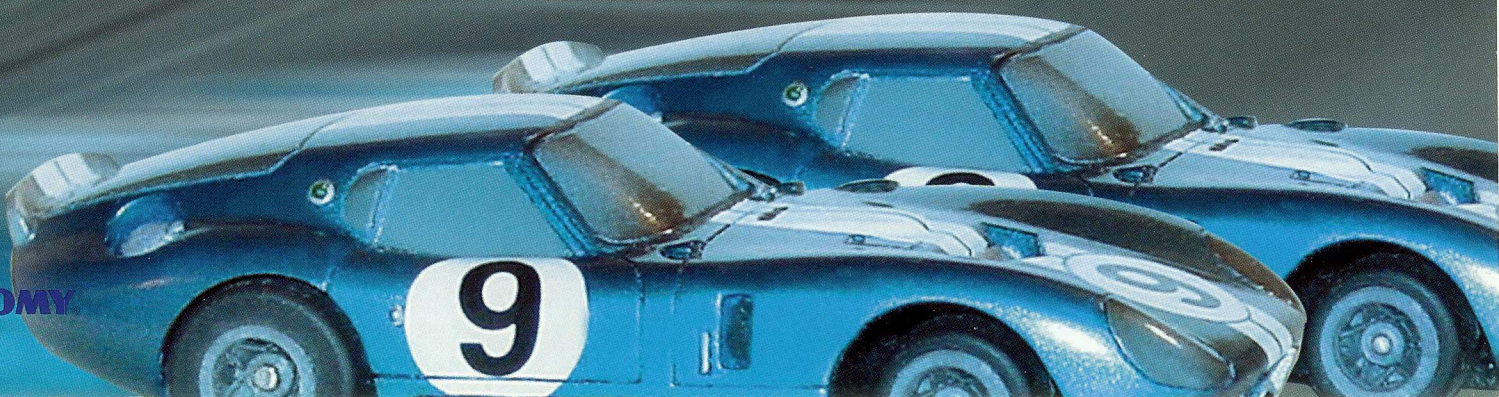


2002

RACEMASTERS™

AFX

TOMY



4 Lanes of racing action!

This four lane set is our most popular ever! Great fun for the whole family or for an entire neighborhood!

Over 16 track configurations possible for the ultimate in LeMans action. Start a racing club today! Comes with everything needed to race.

4
LANES!

P/N
9939

25'
RUNNING
FEET
OF TRACK

INTERNATIONAL C SUPER CHALLENGE

FEATURES: 4 **G-Plus** Formula style race cars - 4 Pro Class controllers - 2 wall type plug in U.L. Listed power packs - pit building and Grandstand - guardrails - over/under section - bridge pylons - and much more! **Cube:** 1.3 **Pack:** 1 **Weight:** 12lbs.

SUPER Coupes

P/N
9946

Over and Under action abounds in this popular set. The vintage Coupes race around chicanes, parabolic corners, and sizzling straight-a-ways. SRT performance and classic racers also help to make this set a real winner.

12.8'

RUNNING FEET
OF TRACK

Cube: 2.6

Pack: 6

Weight: 32lbs.



FEATURES: 2 **SRT** Classic Coupe race cars - 2 Pro Class controllers - 1 wall type plug in U.L. Listed power pack - pit building and Grandstand - guardrails - over/under section - bridge pylons - and much more!

4Way Split™

P/N
9945

High speed challenges await the racer who tackles this course. It's tricky, treacherous, and fun! Over/under, split track, dual lap counters, this track has it all. Includes everything you need to race. Fun for the whole family.



25.0'
RUNNING FEET
OF TRACK

4
LANES!

Cube: 2.6 Pack: 2 Weight: 28lbs.

FEATURES: 4 **SUPER G-Plus™** Prototype style race cars - 4 Pro Class controllers - 2 wall type plug in U.L. Listed power packs - Pit building and Grandstand - guardrails - over/under section - bridge pylons - dual ten-lap lap counters - and much more!

BIG BLOCK BATTLEERS™

A twisty torture track provides loads of excitement for racers who crave a challenge. Super G+ stockers tackle this track of multiple over/unders and super high speed straight-a-ways.



P/N
9117
40.0'
RUNNING FEET
OF TRACK

Cube: 4.0
Pack: 3
Weight: 35lbs.

FEATURES:

SUPER G-Plus™

Stock Cars (2) - 2 Pro Class controllers - 1 wall type plug in U.L. Listed power pack - Pit building and Grandstand - guardrails - multiple over/under sections - bridge pylons - lap counter - squeeze track - and much more!

GIANTTM RACEWAY

This is the big one! The Grand-Daddy of all slot car sets. The Giant has it all. Over/Under racing, long straights, banked turns, squeeze track, and more.

62.5'

RUNNING FEET
OF TRACK

P/N
9868

Cube: 5.4
Pack: 3
Weight:
46lbs.

FEATURES:

**SUPER
G-PlusTM**

Indy Cars (2) - 2 Pro Class controllers - 1 wall type plug in U.L.
Listed power pack - Pit building and Grandstand - guardrails - multiple over/under sections - bridge pylons - lap counter - squeeze track - crossover track - and much more!



Hot Figure-8 action! A great starter set- also fun for the experienced racer. Economical price point makes this one a hot mover.

INFINITYTM

P/N
9111

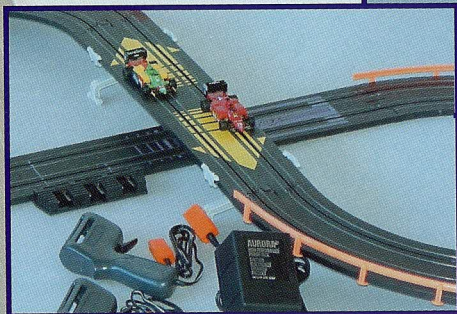
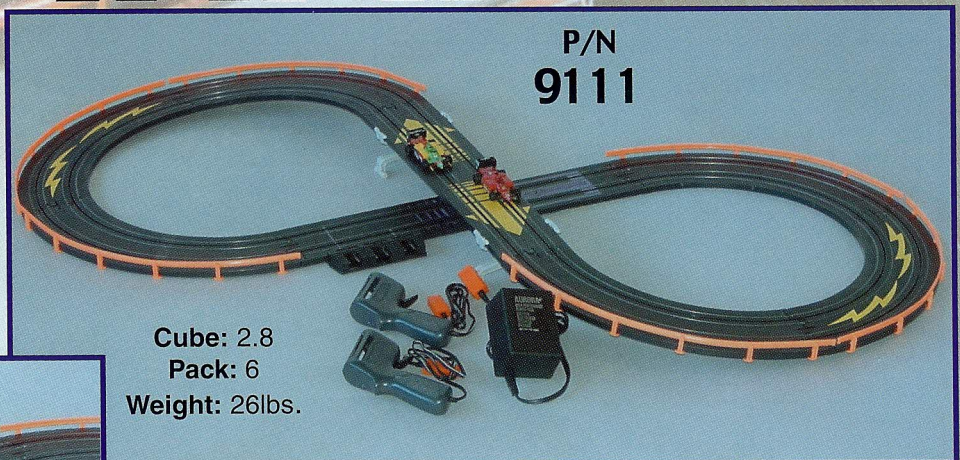
8.5'

RUNNING FEET
OF TRACK

Cube: 2.8
Pack: 6
Weight: 26lbs.

FEATURES:

2-Racing Turbo Formula type race cars - 2 Pro Class controllers - 1 wall type plug in U.L. Listed power pack - guardrails -over/under section - bridge pylons - ready to race.



Cars



SRT Car
Packaging features
Hi Impact Graphics

SRT™

Back for the 2002 model year are the blistering fast SRT cars. These are the fastest H.O. cars on the market today. Just check out these features:

Neo Dymium Magnets - Hi Torque Gear Ratios - Non Disengaging Pick Up Shoes Hi Conductivity Shoe Springs - Ground Effects - Hot Armature

These are the cars you need to race when you want to win. The ultimate in H.O. is here. SRT cars are just a phone call away.



9430 Porsche 959



9431 Porsche 962



9432 Porsche 956



9433 Thunderbird



9434 Thunderbird



9435 Porsche 959



9436 Thunderbird



9438 Formula-1



9339 IRL



9440 CART Racer



9441 CART Racer



9442 Classic Beamer

Standard Pack:12 Carton Weight: 3 Pounds Dimension: 7.5" x 10.2" x 9.5" Cube: 0.43

RACEMASTERS

VINTAGE Coupe

SRT Vintage Collectors Series

You've read about the "Missing Coupe" in the newspapers. The price tags for these famous Pete Brock designed racers are in the \$4,000,000 range and climbing. Racemasters brings these historic and mysterious cars to you in authentic colors and livery.



1964
COBRA
DAYTONA
COUPE

SRT™

There are only a few of the real Daytona Coupes left in the world today but we've got a whole bunch of them. The

original cars were powered by Ford 289 C.I. engines, these SRT cars are powered by a 12VDC power pack!



9446 White Coupe

9443 Dk Blu Coupe

9445 Red Coupe

9444 Lt Blue Coupe

Incredible detail adds to the collector value of these cars.



The original Coupes won Le Mans, Sebring, Daytona, and set 23 World and National speed records at Bonneville Salt Flats. Our Coupes will put a smile on your face and give you the thrill of racing at home.

Racemasters is always bringing you something new and exciting. Check out the detail on these SRT cars. Racemasters sets a new level of realism and scale. Of course Racemasters also offers every track and accessory you could think of.

While our competitors are reducing their lines, we are adding on! Racemasters has everything you need to make your customers happy! SRT Collectors series cars not only look good, they also feature heart stopping performance. These babies Rip!

Standard Pack: 12 Carton Weight: 3 Pounds
Dimension: 7.5" x 10.2" x 9.5" Cube: 0.43

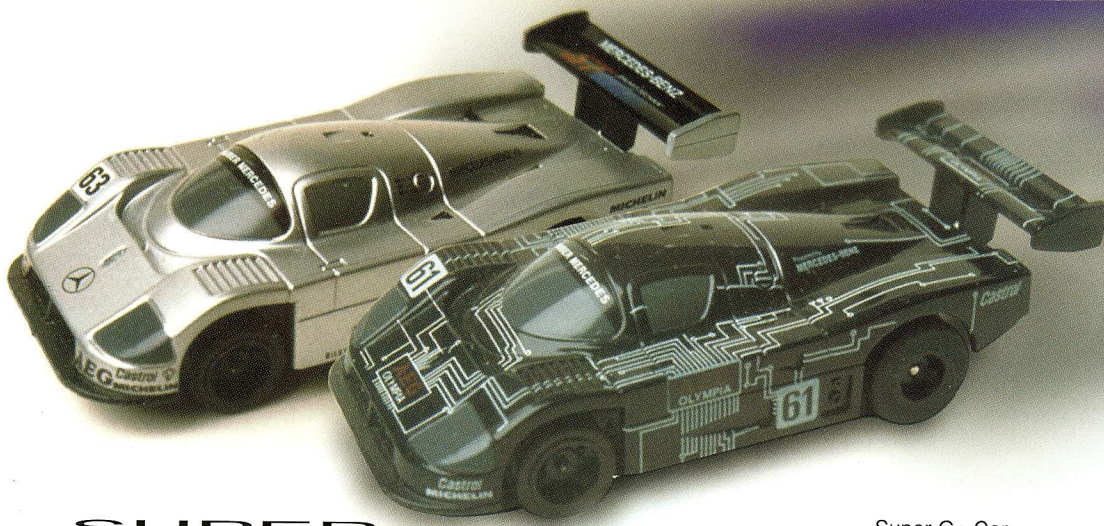


The Vintage Coupes come with our awesome SRT chassis. Performance and looks equals value!

SRT™



RACEMASTERS



SUPER G-Plus™

The Performance Standard

Super G+ Car
Packaging features
Hi Impact Graphics

The performance standard in H.O. Racing was set many years ago by the Super G+ car. Today, the updated Super G+ features: High Output Precision Wound Armature, Ground Effects Magnets, Tru-Trac Racing Tires, High Conductivity Pick Up Shoes, Micro Spur Gears, and more!

When you are serious about racing, these cars have all the right stuff. The legend continues with the Super G+ line.



8815 Jaguar Castrol



9201 Mercedes C9



9202 Jaguar Silk Cut



9871 Mercedes Ckt. Board



9206 Toyota Tenoras



9885 Highway Patrol



9207 MP 4/5



9211 Larousse



9935 Champ Car



9936 Champ Car

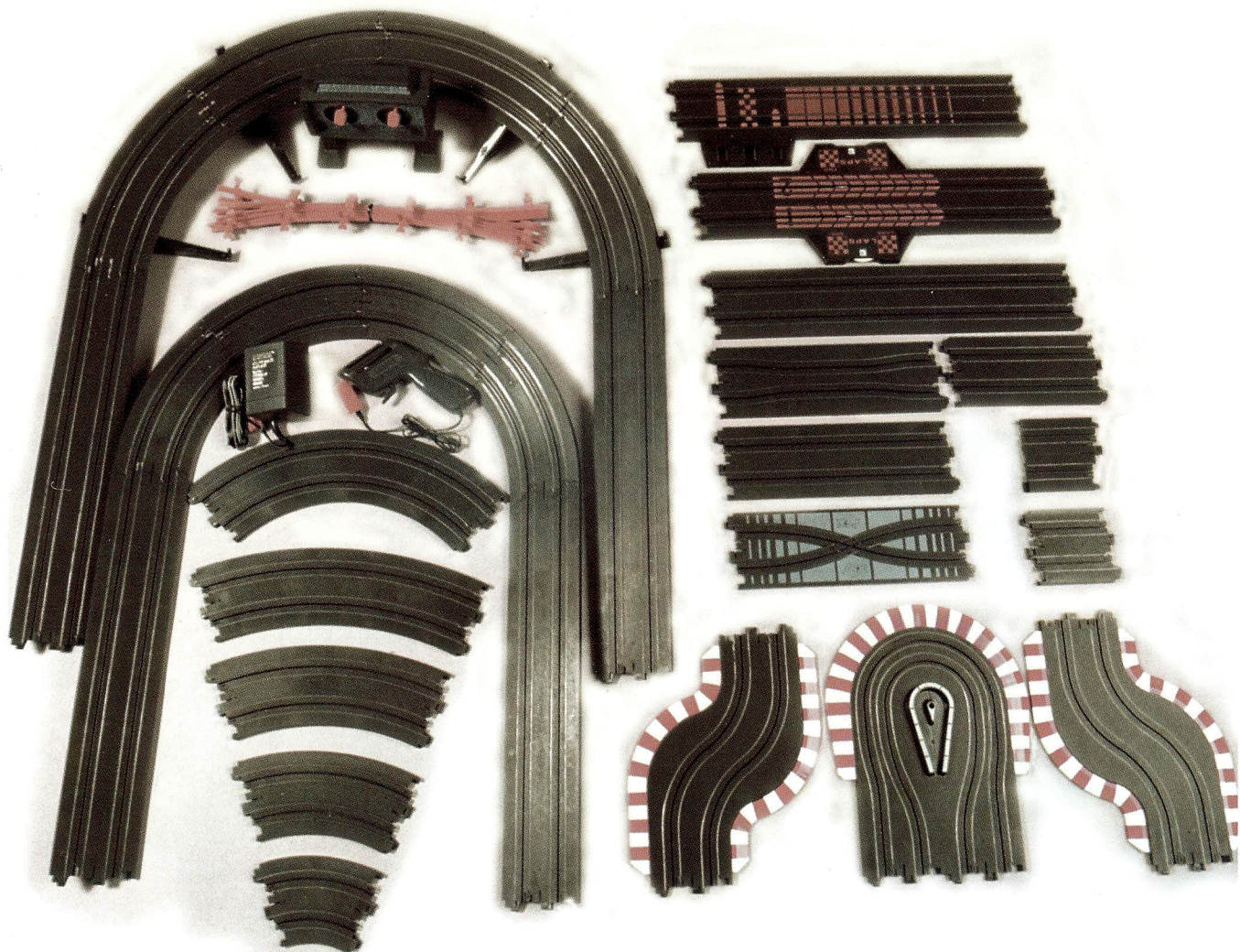


Legendary Performance

Standard Pack: 12 Carton Weight: 3 Pounds
Dimension: 7.5" x 10.2" x 9.5" Cube: 0.43

RACEMASTERS

PARTS & ACCESSORIES



Make your layout bigger, more exciting, or add accessories.

One of the best features of the Racemasters line is the expendability. With our complete line of parts and accessories you can let your imagination be your guide when building your "Dream Track". Virtually any configuration imaginable for a two or four lane track can be made. all Racemasters AFX parts come packaged on a 4-color card, poly-sealed, ready for display.

Assortments and individual "Master Packs" are both available.

8628	9" Banked Curve Set	8646	15" Lap Counter
8630	Controller	8621	15" Straight Track, Pair
8631	Power Pack	8626	3" Adapter Track, Pair
8656	6" 1/8th Curve	8622	9" Straight Track, Pair
8663	15" 1/8th Curve	8641	6" Straight Track, Pair
8992	3" Hairpin Curve	8632	3" Straight Track, Pair
8993	9" Chicane	8655	9" Cossover Track, Pair
9634	Tune Up Kit Racing Turbo	8648	Guardrails, 10 Pack
8995	Tune Up Kit G+	8629	Lap Counter, Automatic
8623	9" 1/4th Curve, Pair	8991	12" Banked Curve Set
8624	9" 1/8th Curve, Pair	8625	9" Squeeze Track
8627	15" Terminal Track		

RACEMASTERS

www.toyracecars.com

TOMY

RACEMASTERS INCORPORATED ANAHEIM HILLS, CA 92807
 PH: (714)974-7172 FX: (714)998-7712 E-MAIL: www.russkit.com
 WEBSITE: www.toyracecars.com

Copyright 2002 Racemasters Inc. All rights reserved. In the interest of constantly improving our product line, colors and descriptions may vary.